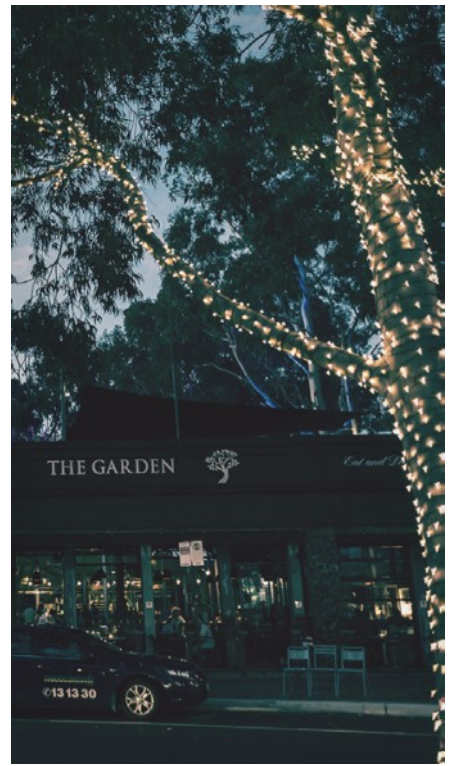

SKYPARK

ON VINCENT





Sheer Convenience

Just minutes from the Perth CBD, at Skypark on Vincent everything revolves around you. The sights and smells of the cafe strip, the energy of Leederville Oval, the taste of fine dining. All of this is within a 5 minute walk from your doorstep, but when this beautifully-designed building also offers a rooftop terrace dubbed the “Sky Lounge” you won’t need to go far to catch up on some well-deserved rest and relaxation.





A Statement in Design

Five levels of architecturally striking apartments, designed with a central landscaped courtyard to encourage natural light and cross ventilation for all residents. Direct lift access is available from secure underground parking. Ground floor commercial space allows for businesses to engage with the local community, while residential apartments take advantage of the views from the levels above.

Building materials and technologies have been carefully selected to contribute to a healthy environment.



The stunning “Sky Lounge” awaits you on the top floor of SkyPark - complete with lush planting and dedicated common areas including an outdoor timber deck to either relax in, or to entertain guests while taking in the views.

Energy-saving motion sensor LED lighting is applied to common areas, and waterwise planting has been selected to ensure the carbon footprint is reduced.





SKYPARK
ON VINCENT

- | | | | |
|-------------------|-------------------|-------------------|--------------------|
| 1 ANNA VIETNAMESE | 4 LUNA CINEMAS | 7 SAYERS | 10 FOAM COFFEE BAR |
| 2 AMANI WINE BAR | 5 LEEDERVILLE IGA | 8 DUENDE TAPAS | 11 CRANKED CAFE |
| 3 DOME CAFE | 6 THE GARDEN | 9 FARMERS MARKETS | 12 KAILIS BROS |

A Location Like No Other





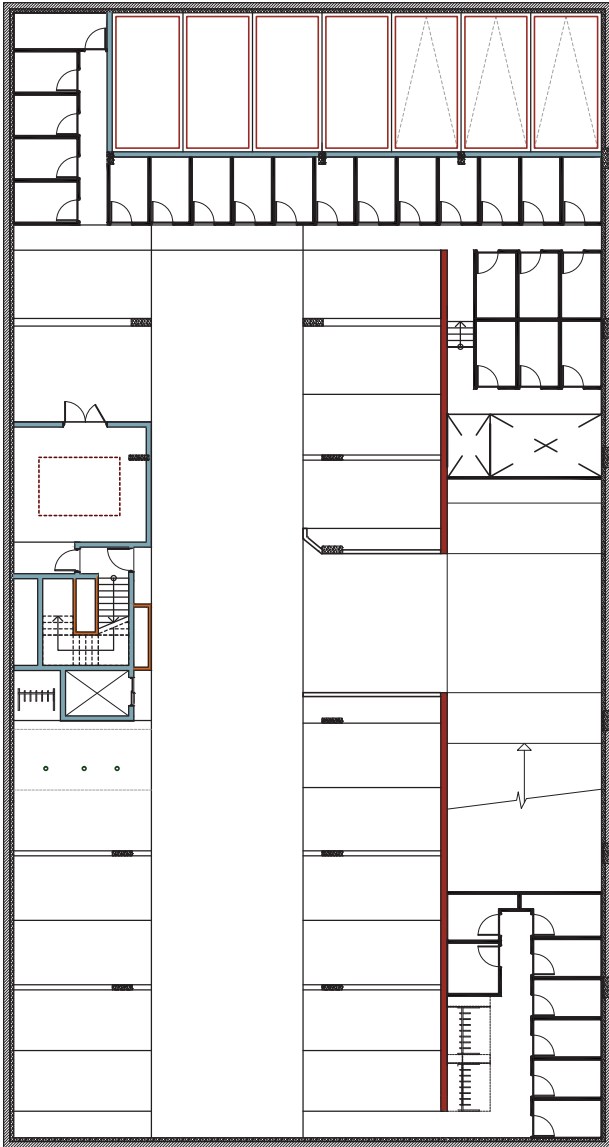
Beautifully Designed, Inside & Out

Skypark's 1 and 2-bedroom apartments offer a new level of design excellence. Interiors blend soft shades and muted tones, allowing you to personalise your apartment in your own individual way.

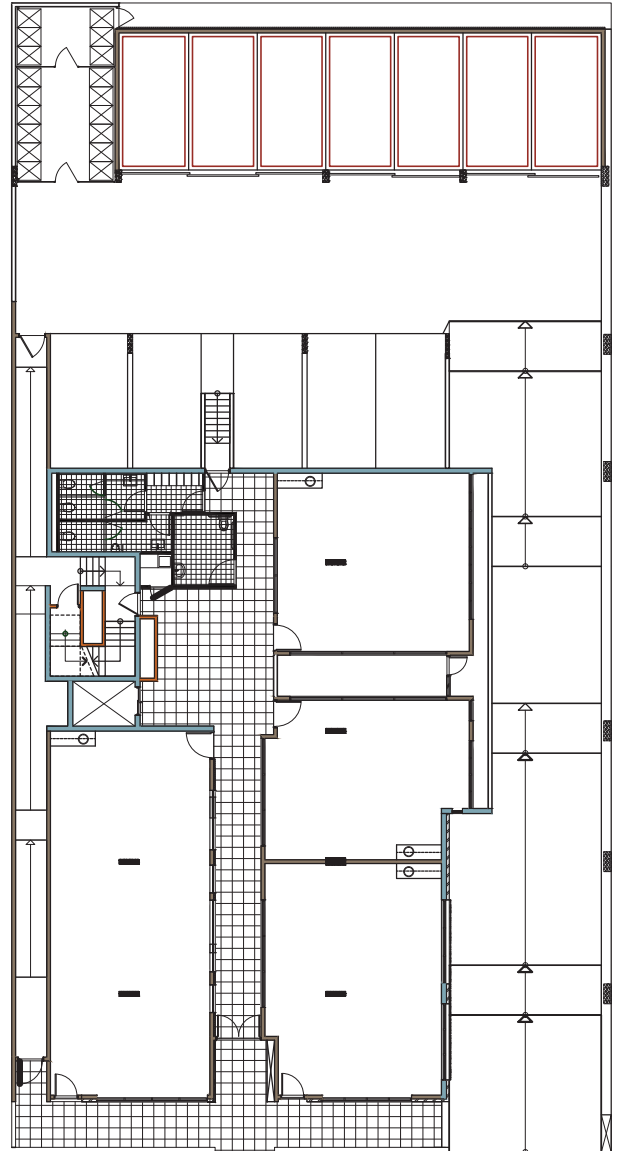
Designed to reinvigorate, apartments at Skypark are designed to bring the outdoors seamlessly into your living areas. Maximising both natural light and breeze flow, passive heating and cooling reduces energy bills and maintains a healthier building for all.

Floor Plans

Basement Level

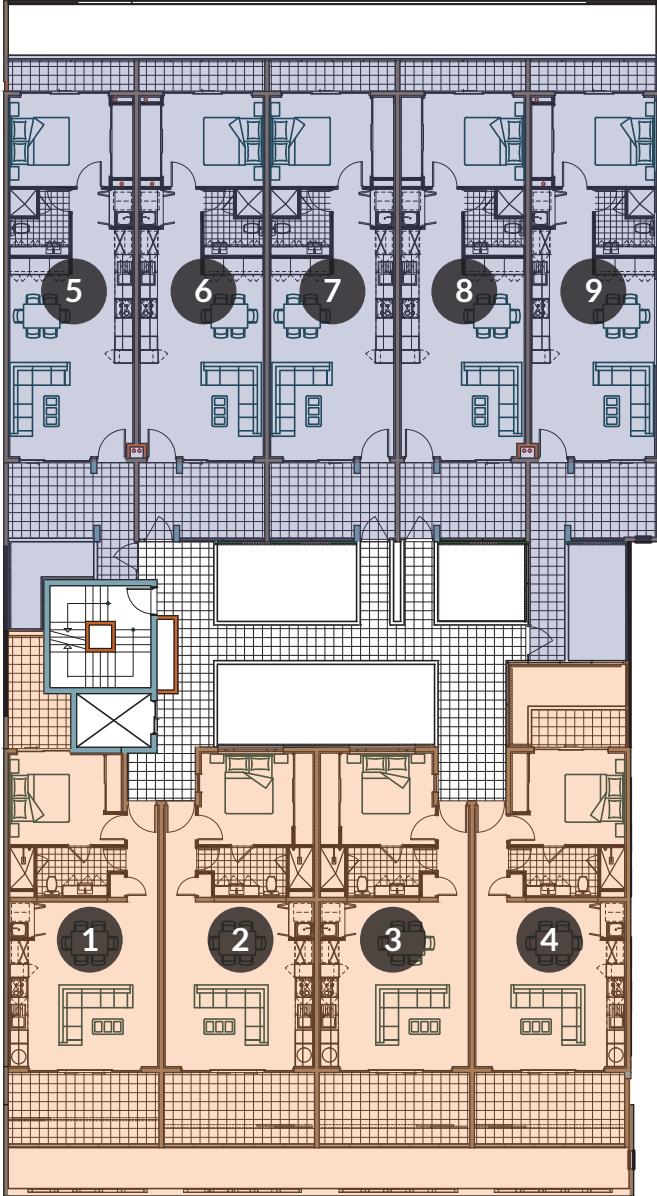


Ground Level



Floor Plans

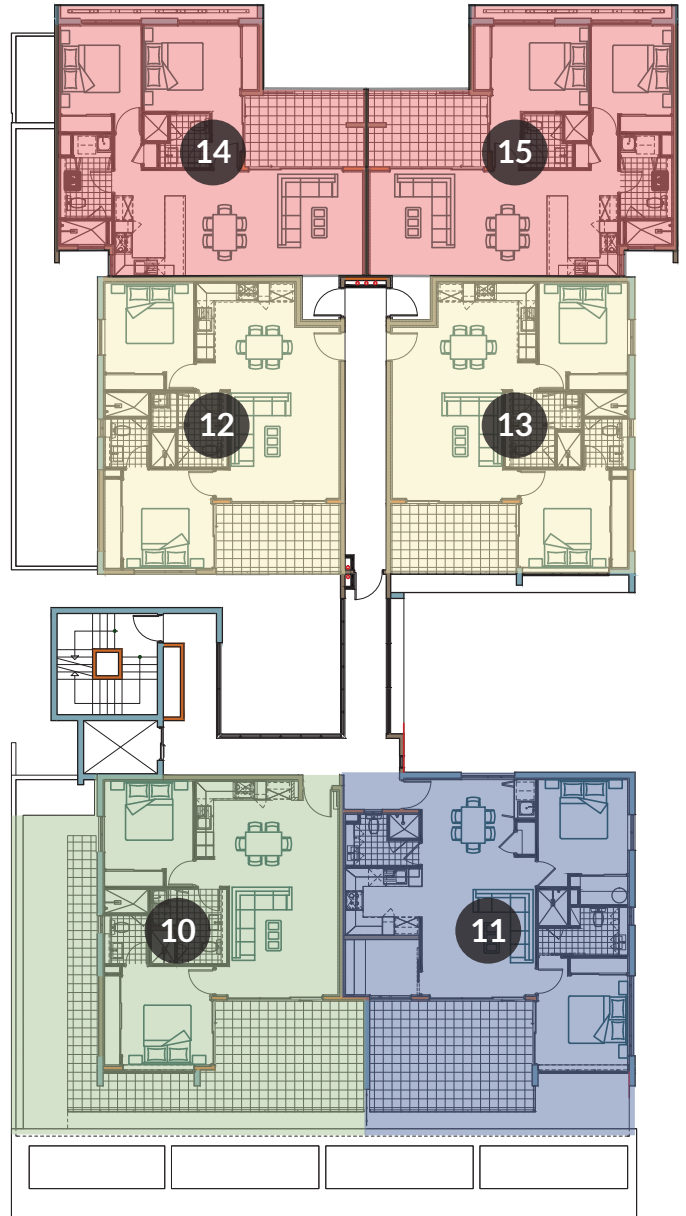
Level 1



TYPE A
1X1

TYPE B
1X1

Level 2



TYPE C
2X2

TYPE C-1
2X2

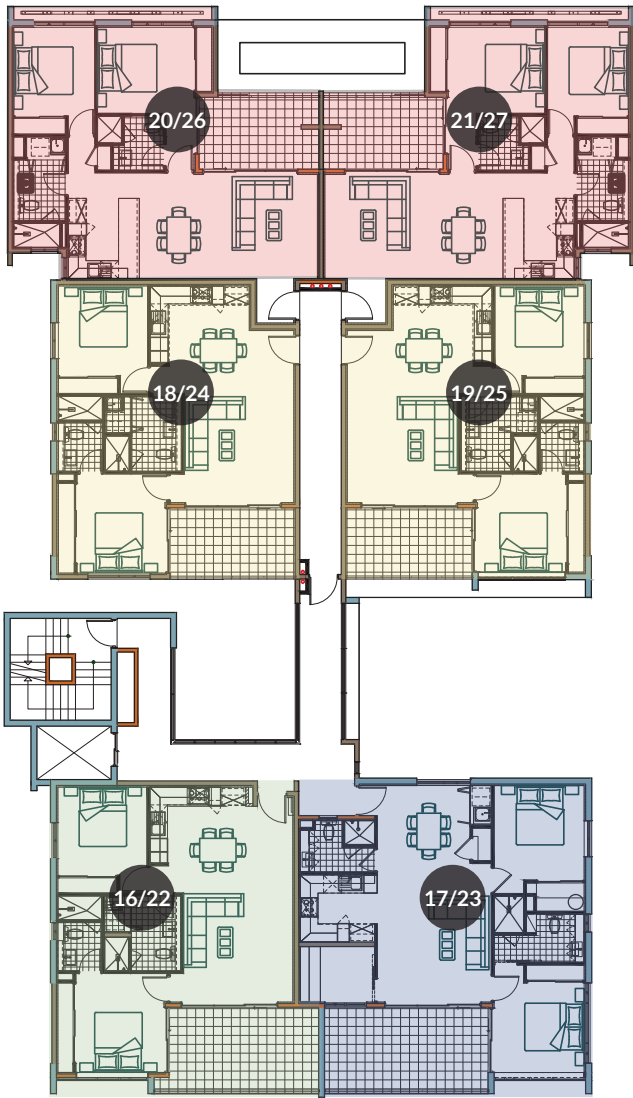
TYPE D
2X2

TYPE E
2X2+S

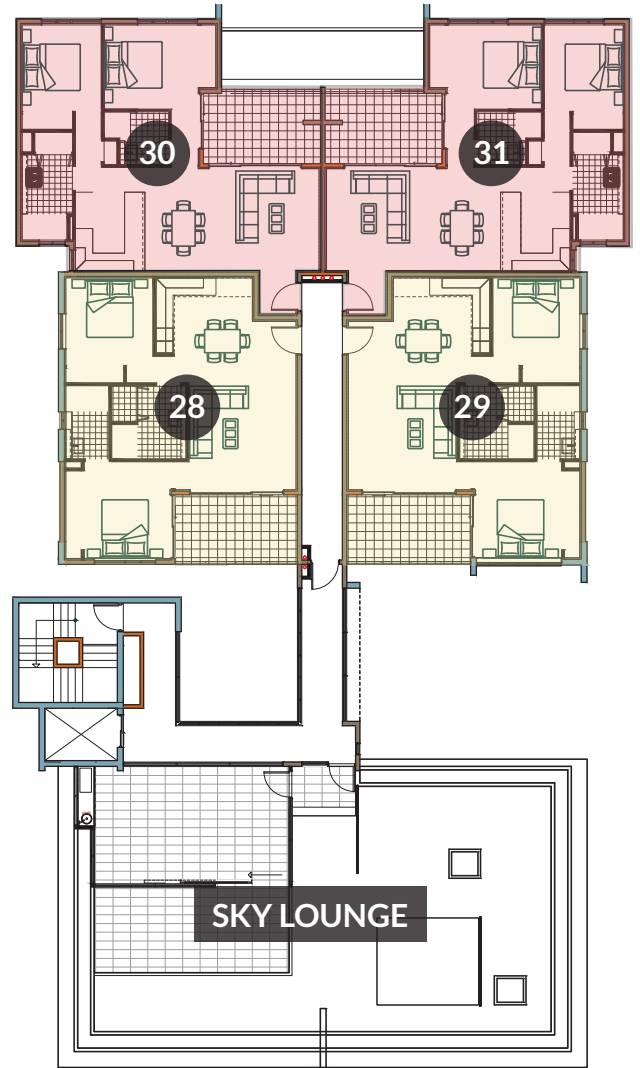


Floor Plans

Levels 3 & 4



Level 5



TYPE C
2X2

TYPE C-1
2X2

TYPE D
2X2

TYPE E
2X2+S

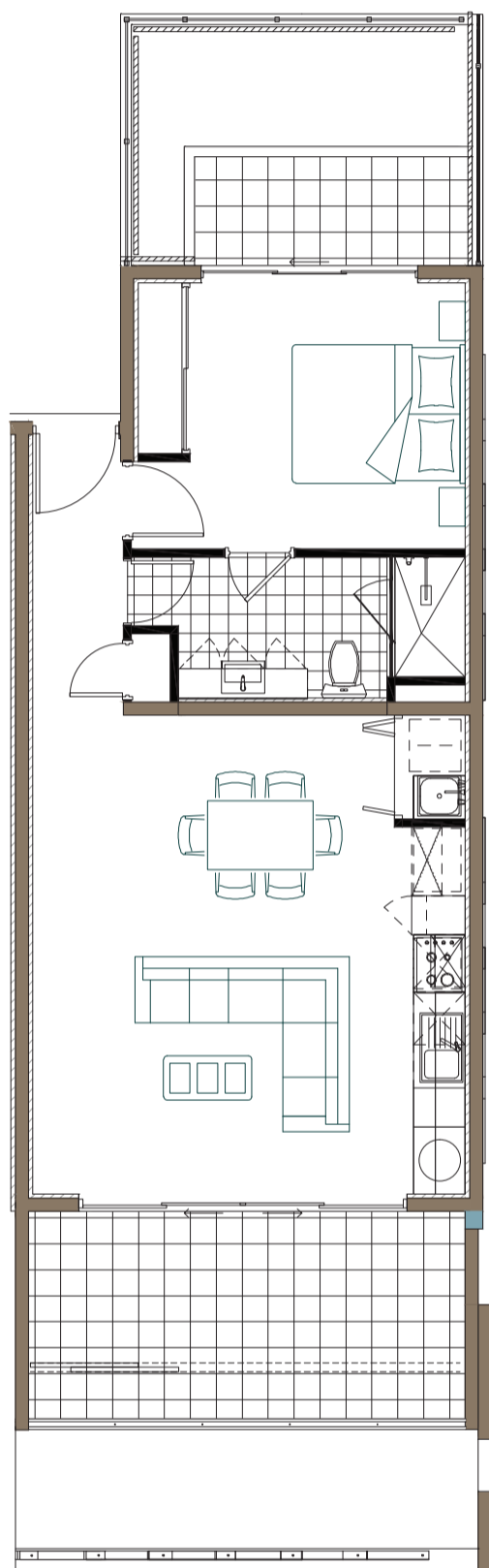
TYPE C
2X2

TYPE D
2X2

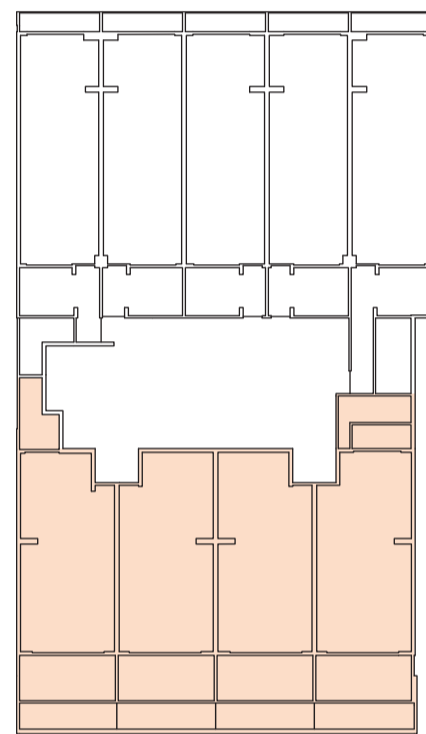


Typical Type A

One Bedroom / One Bathroom



TYPE A
1X1



LEVEL 1

Apartments 1 - 4

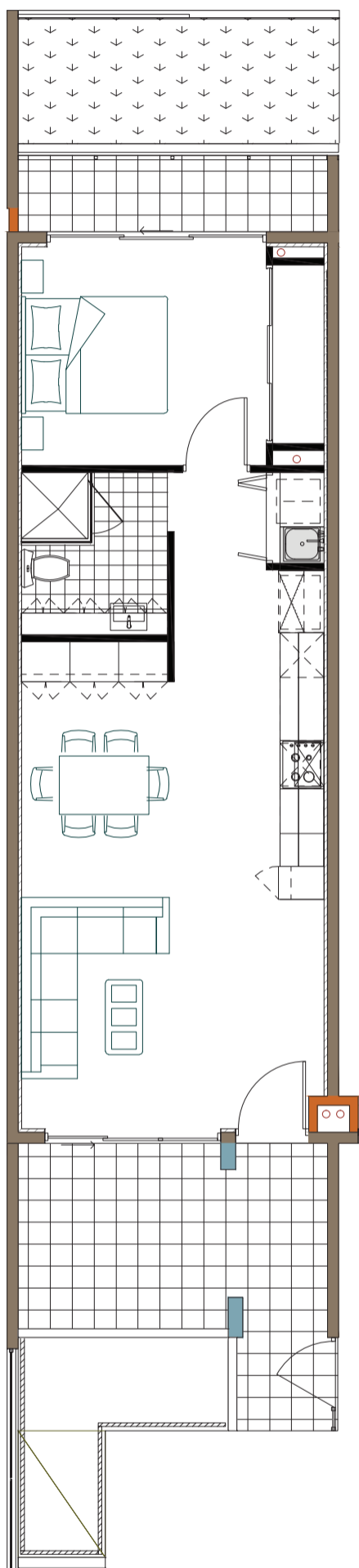
Architectural Area	52 - 54 m ²
Outdoor	20 - 30 m ²
Store	4 m ²
Total	76 - 88 m²

Living	5.0 x 3.3m
Master Bed	3.9 x 3.2m
Kitchen/Meals	5.0 x 2.4m
Bath	3.0 x 1.6m

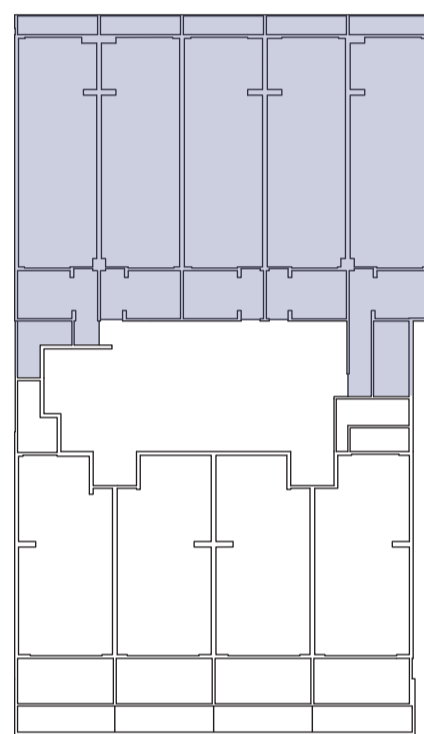
DISCLAIMER: The information above should be used as a guide only. The Seller and companies related to it and its Agents do not warrant the accuracy of the information or illustrations and do not accept any liability for any error or discrepancy in that information. While the Seller believes that the floor plans are accurate at time of publication, information is subject to change and The Seller disclaims any liability for any loss or damage which may arise from any person or party acting in reliance upon these plans.

Typical Type B

One Bedroom / One Bathroom



TYPE B
1X1



LEVEL 1

Apartments 5 - 9

Architectural Area	53 m ²
Outdoor	15 - 28 m ²
Store	4 m ²
Total	72 - 85 m²

Living	4.2 x 4.0m
Master Bed	3.4 x 3.1m
Kitchen/Meals	4.2 x 3.0m
Bath	2.0 x 1.9m

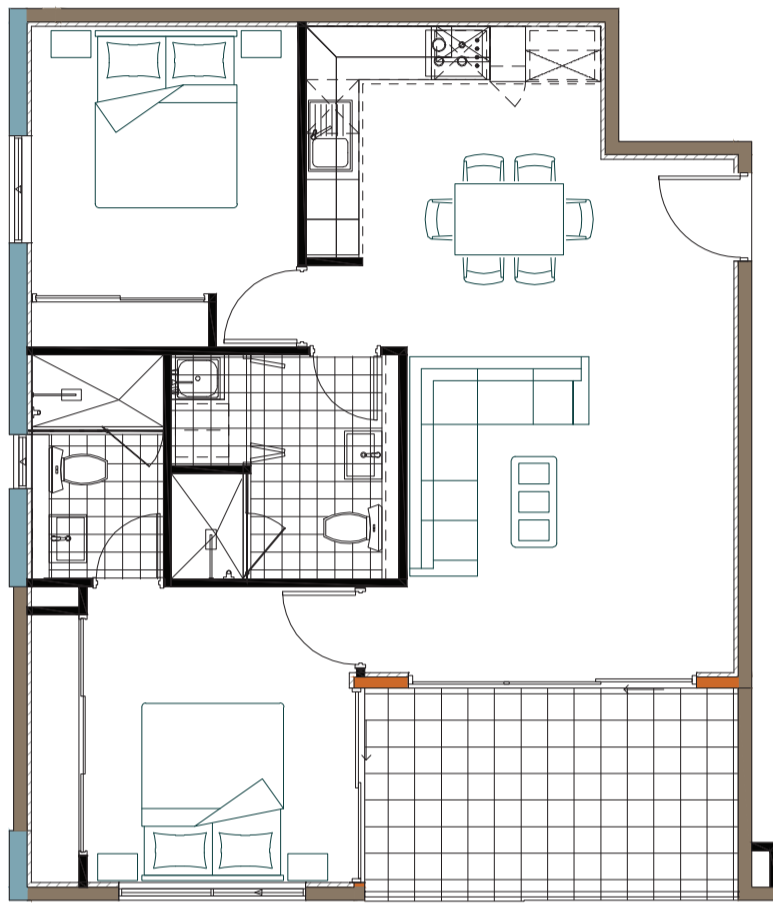
DISCLAIMER: The information above should be used as a guide only. The Seller and companies related to it and its Agents do not warrant the accuracy of the information or illustrations and do not accept any liability for any error or discrepancy in that information. While the Seller believes that the floor plans are accurate at time of publication, information is subject to change and The Seller disclaims any liability for any loss or damage which may arise from any person or party acting in reliance upon these plans.

SKYPARK

ON VINCENT

Typical Type C

Two Bedroom / Two Bathroom



TYPE C
2X2



Apartments 12, 13, 18, 19, 24, 25, 28 & 29

Architectural Area	69 m ²	Living	4.2 x 4.0m
Outdoor	10 m ²	Master Bed	3.4 x 3.1m
Store	4 m ²	Kitchen/Meals	4.2 x 3.0m
Total	83 m²	Bath	2.0 x 1.9m

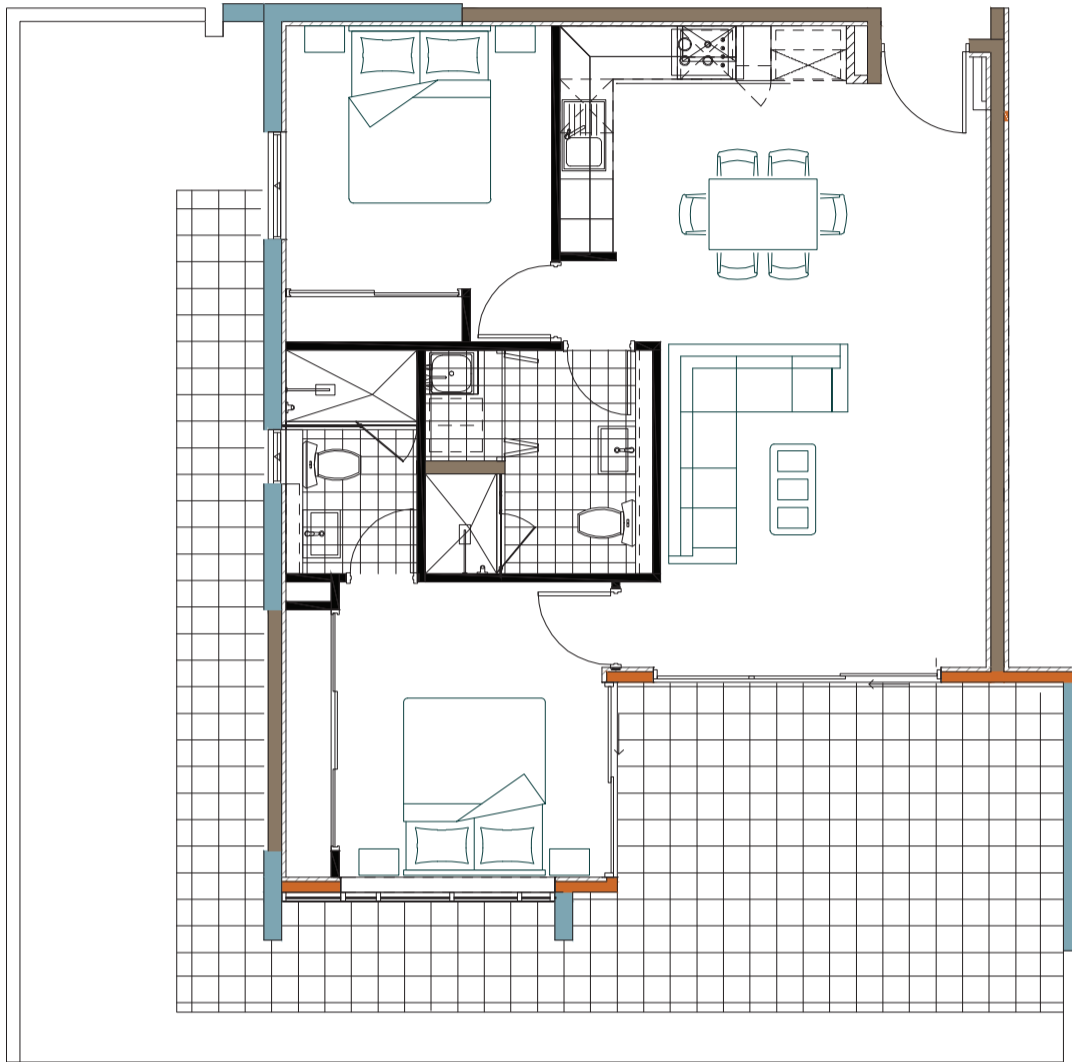
DISCLAIMER: The information above should be used as a guide only. The Seller and companies related to it and its Agents do not warrant the accuracy of the information or illustrations and do not accept any liability for any error or discrepancy in that information. While the Seller believes that the floor plans are accurate at time of publication, information is subject to change and The Seller disclaims any liability for any loss or damage which may arise from any person or party acting in reliance upon these plans.

SKYPARK

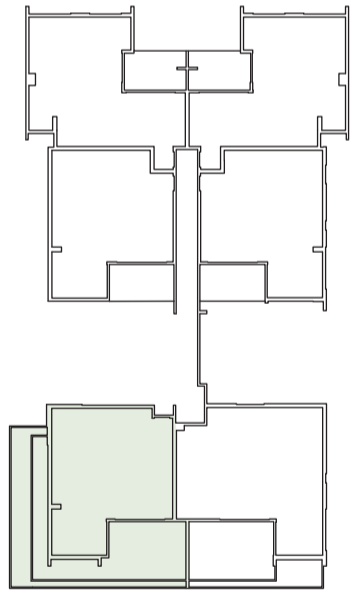
ON VINCENT

Typical Type C-1

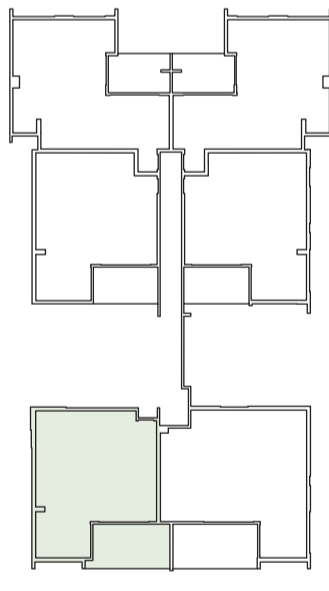
Two Bedroom / Two Bathroom



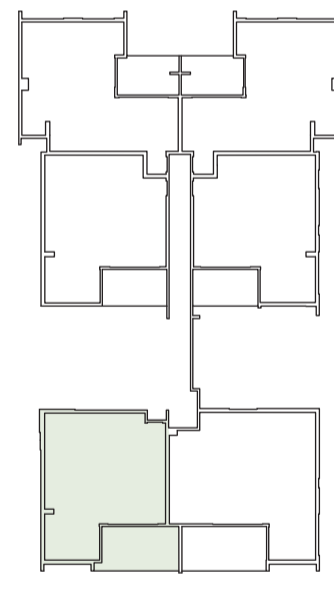
TYPE C-1
2X2



LEVEL 2



LEVEL 3



LEVEL 4



Apartments 10, 16 & 22

Architectural Area	70 m ²
Outdoor	15 - 52 m ²
Store	4 m ²
Total	89 - 126 m²

Living	3.7 x 3.7m
Master Bed	3.0 x 3.3m
Bed 2	3.0 x 3.0m
Kitchen/Meals	4.8 x 3.6m
Ensuite	1.3 x 2.5m
Bath	2.4 x 2.5m

DISCLAIMER: The information above should be used as a guide only. The Seller and companies related to it and its Agents do not warrant the accuracy of the information or illustrations and do not accept any liability for any error or discrepancy in that information. While the Seller believes that the floor plans are accurate at time of publication, information is subject to change and The Seller disclaims any liability for any loss or damage which may arise from any person or party acting in reliance upon these plans.

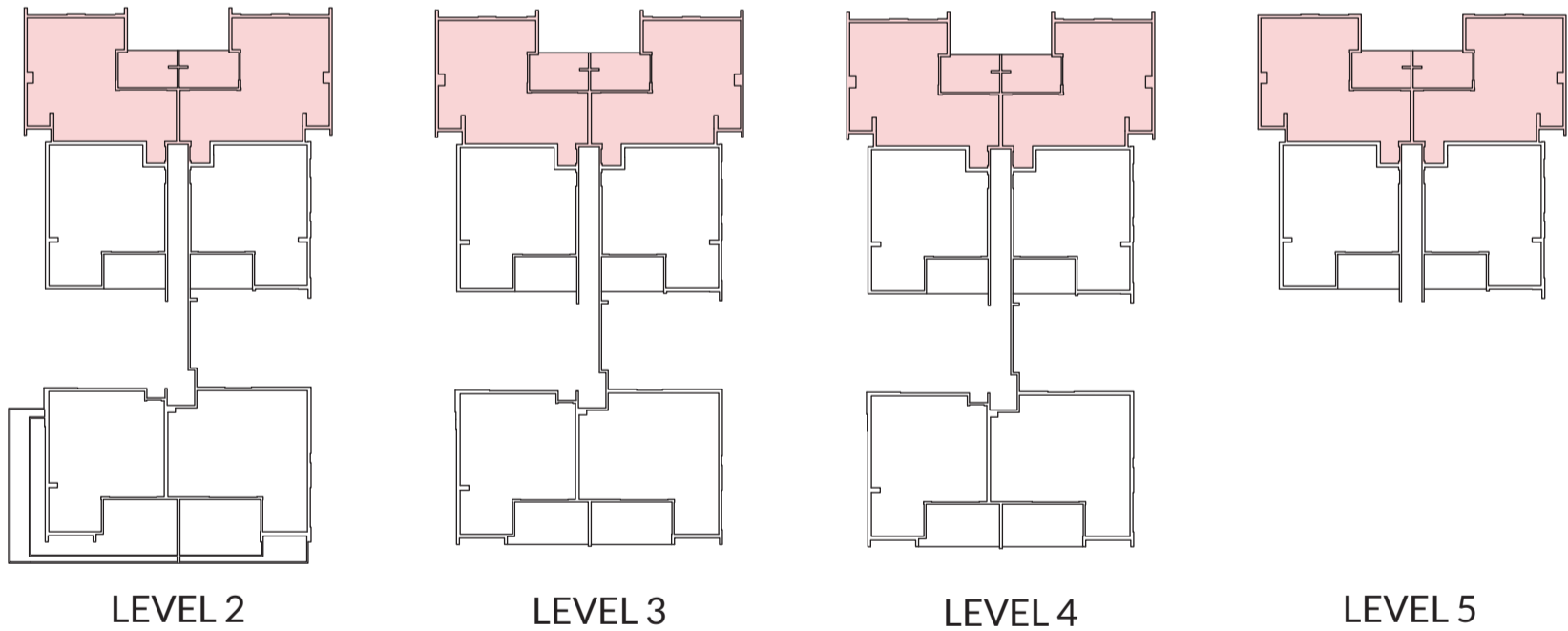
SKYPARK

ON VINCENT

Typical Type D

Two Bedroom / Two Bathroom

TYPE D
2X2



Apartments 14, 15, 20, 21, 26, 27, 30 & 31

Architectural Area	73 m ²	Living	3.5 x 3.6m	Meals	2.5 x 3.5m
Outdoor	10 m ²	Master Bed	3.3 x 2.9m	Ensuite	2.2 x 1.8m
Store	4 m ²	Bed 2	4.2 x 3.0m	Bath	1.5 x 2.9m
Total	87 m²	Kitchen	2.4 x 3.5m		

DISCLAIMER: The information above should be used as a guide only. The Seller and companies related to it and its Agents do not warrant the accuracy of the information or illustrations and do not accept any liability for any error or discrepancy in that information. While the Seller believes that the floor plans are accurate at time of publication, information is subject to change and The Seller disclaims any liability for any loss or damage which may arise from any person or party acting in reliance upon these plans.

SKYPARK

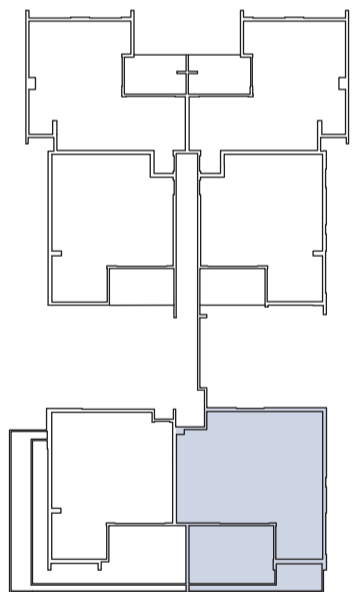
ON VINCENT

Typical Type E

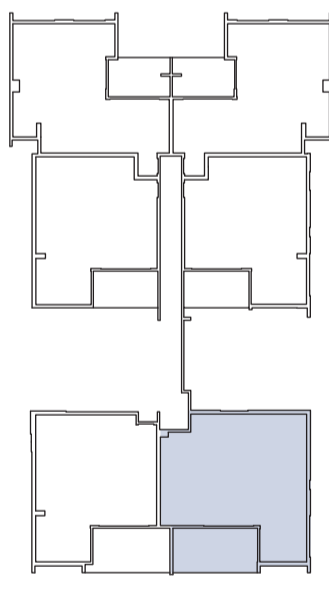
Two Bedroom / Two Bathroom / Study



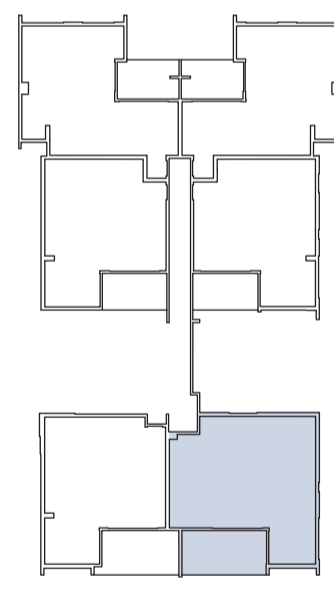
TYPE E
2X2+S



LEVEL 2



LEVEL 3



LEVEL 4



Apartments 11, 17 & 23

Architectural Area	81 m ²	Living	3.8 x 4.8m	Meals	3.8 x 2.6m
Outdoor	16 - 29 m ²	Master Bed	3.1 x 3.0m	Bath	2.5 x 1.7m
Store	4 m ²	Bed 2	3.0 x 3.2m	Ensuite	3.0 x 2.1m
Total	101 - 114 m²	Kitchen	2.6 x 2.2m	Bath	2.5 x 1.9m

DISCLAIMER: The information above should be used as a guide only. The Seller and companies related to it and its Agents do not warrant the accuracy of the information or illustrations and do not accept any liability for any error or discrepancy in that information. While the Seller believes that the floor plans are accurate at time of publication, information is subject to change and The Seller disclaims any liability for any loss or damage which may arise from any person or party acting in reliance upon these plans.



DISCLAIMER: The information in this brochure should be used as a guide only. Plans, photos, and images are for illustrative purposes only and do not constitute a representation, term, or condition with respect to any contract or offer to purchase. While the Seller believes that the floor plans are accurate at time of publication, information is subject to change and The Seller disclaims any liability for any loss or damage which may arise from any person or party acting in reliance upon these plans.

